

Suggested Settings: Floating and Mounting of Mouse Lung Sections Using the AquaroASM Section Mounting System

Microtome Settings and Accessories

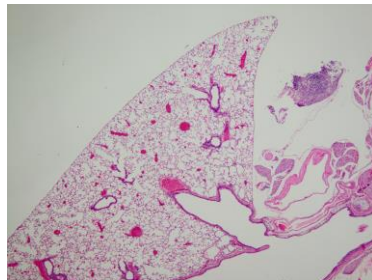
Microtome model	Leica RM2255
Knife angle	36-38°
Cut speed	3
Section thickness	4 μ m
Blade	Encore Low Profile
Slides	Premiere 7308W Charged White

Tissue Settings

Paraffin	Surgipath Paraplast
Hydration time	30 minutes
Hydration method	Ice block and water
Dewrinkling temperature	58°C
Dewrinkling time	3 seconds

The intention of the above settings information is to serve as a starting point only. Each laboratory should determine program settings that obtain the best results for their equipment, tissue, and reagents.

Automating Microtomy



Mouse lung tissue de-wrinkled and mounted with the AquaroASM. Stained with hematoxylin and eosin (H&E). 4X magnification.